

Densitometer



Dolphin-Scan Plus is a professional Scanner for 2-D Gel, SDS-PAGE, Western Blot, X-ray film serving for high resolution image catch. Both transparency and reflectance mode are applicable for whether the samples are dry or wet.

Features

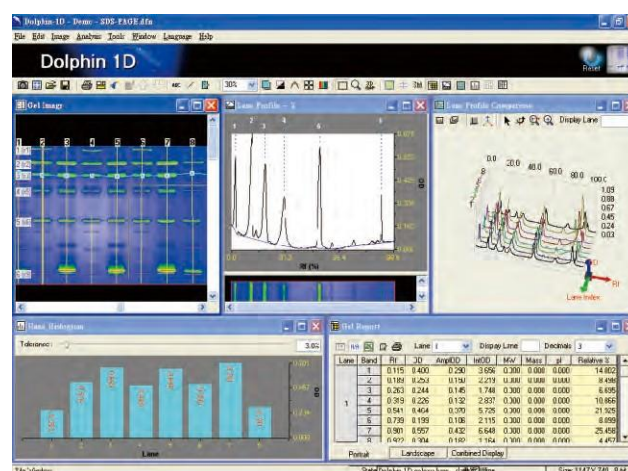
- Transparency adapter for different film sizes
- Deliver the accurate images of gel sample
- Unique high speed blue light scanning
- Make batch scanning easily
- 1-D software available

Applications

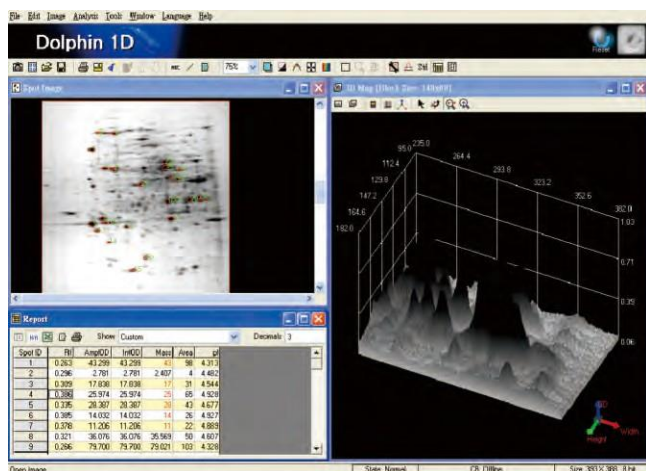
- Education, university, academic and research institute
- Analytical chemistry, molecular laboratory
- Food industrial and inspection laboratory
- Drug discovery, Biotechnology company
- Proteomics, genomics core facility
- Enzyme reaction, immunology

1D Software

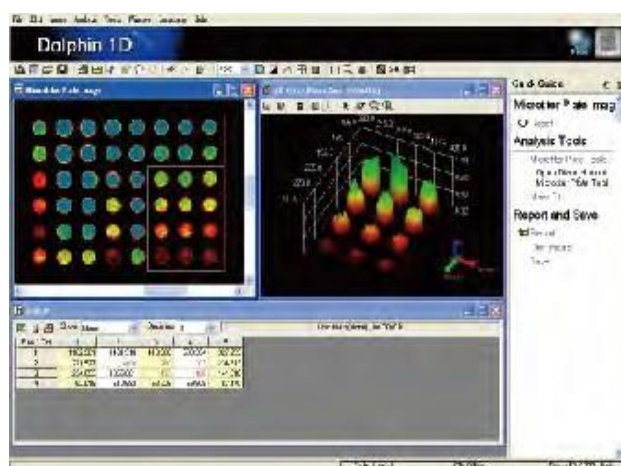
- Support JPG, JPEG, BMP, TIFF, PCX, TGA, GIF format
- Comprehensive microtiter plate analysis
- Traceable image enhancement function
- Automatic data analysis with one click
- Specialized X-axis bands comparison
- Smiling gel identification ability
- Individual lane profile defining
- Iso-electric point simulation
- Intelligent colony counting
- Spot density calculation
- 3D image profile display



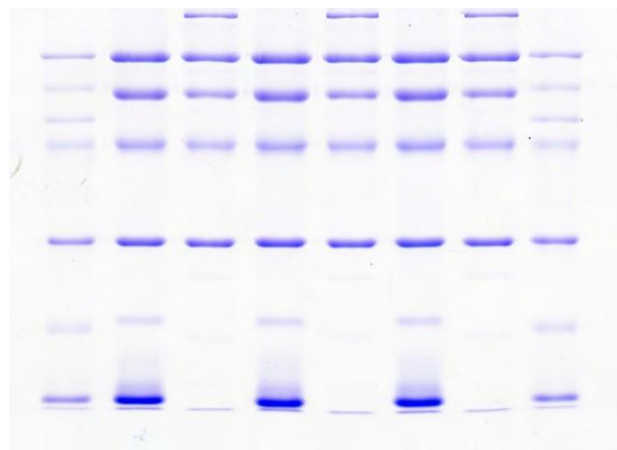
MW/Mass Determination



Spot Density Calculation



Microtiter Plate



Positive film scan of SDS-PAGE with 300 dpi



Reflective scan of PVDF with 300 dpi

Specifications

Optical resolution	Epson Dual Lens System, 4800dpi and 6400dpi with Epson MatrixCCD®
Maximum hardware resolution	4800 x 9600dpi. 6400 x 9600dpi with Micro Step Drive® technology
Maximum interpolated resolution	12,800 x 12,800dpi
High pass optics	Anti-reflective optical coating and high reflection mirror
Optical density	4.0 Dmax
Color scan mode (bit depth)	48 bits internal / external
Monochrome scan mode (bit depth)	16 bits internal / external
Maximum reflective scan area	8.5" x 11.7"
Color scan mode	6-line color CCD---single pass
Light source	White cold cathode fluorescent lamp
Computer connection	Hi-speed USB 2.0
Scan interface	TWAIN compliant
Scanning speed	4800dpi with High-Speed mode; 10.8ms / line (approx.) with full color / monochrome mode

The spec is subject to change without prior notice.

Ordering Information

Catalog No.	Description
1143002	Dolphin-Scan Plus Image system with Dolphin 1D software, 100 - 240V / 50 - 60Hz
1144001	Advanced Dolphin-1D software for MW / Mass Determination, Colony Counting, Spot Density, and Microtiter Plate
1144002	Dolphin-1D GLP / GMP software



Wealtec Bioscience Co., Ltd.
27F., No.29-1, Sec. 2, Zhongzheng E. Rd., Danshui Dist.,
New Taipei City 251, Taiwan
Tel: +886-2-8809-8587 Fax: +886-2-8809-8589
E-Mail:sales@wealtec.com Web-site:http://www.wealtec.com

No.1208DOS01©2024Wealtec Corp

